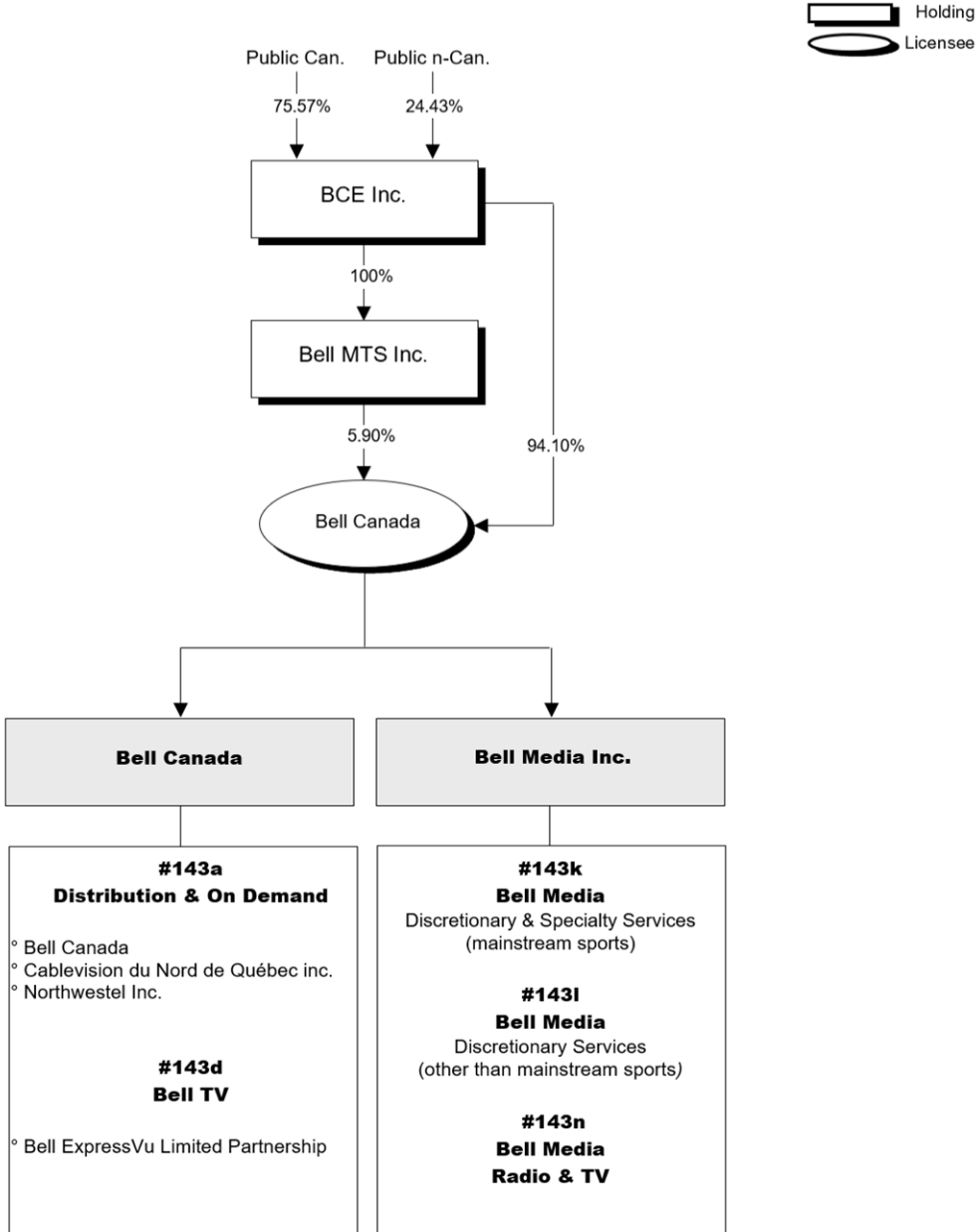


BCE Corporate Structure



UPDATE

Amalgamation – 2017-04-01 – of Bell Canada and MTS Inc. to continue as Bell Canada.

Update – 2017-09-07 – of description of various services.

Update – 2017-10-25 – of BCE Inc. and Bell Canada's shareholding as per the 2017 Broadcasting Ownership Information Annual Filing.

Update – 2018-10-16 – of BCE Inc. and Bell Canada's shareholding as per the 2018 Broadcasting Ownership Information Annual Filing.

Update – 2019-02-26 – minor changes.

Update – 2019-10-04 – of BCE Inc.'s shareholding as per information submitted in the 2019 Data Collection System.

Update – 2021-01-21 – of BCE Inc.'s shareholding as per information submitted in the 2020 Data Collection System.

Update – 2023-01-11 – of BCE Inc.'s shareholding as per information submitted in the 2022 Data Collection System.

Update – 2024-01-17 – of BCE Inc.'s shareholding as per information submitted in the 2023 Data Collection System.

Update – 2026-01-20 – of BCE Inc.'s shareholding as per information submitted in the 2025 Data Collection System.

SEE ALSO

143a, 143d, 143k, 143l & 143n

NOTICE

The CRTC ownership charts reflect the transactions approved by the Commission and are based on information supplied by licensees. The CRTC does not assume any responsibility for discrepancies between its charts and data from outside sources or for errors or omissions which they may contain.

APPENDIX

Notes: The percentages in this chart refer to voting rights only.

BCE Inc. is held as follows:

- 75.57% by public Canadians and
- 24.43% by public non-Canadians

BCE Inc. holds the following:

- 100% of Bell MTS Inc. and
- 94.10% in Bell Canada. The remaining 5.90% is held by Bell MTS Inc.

BCE Inc. also various corporations involved in broadcasting.

On this chart, BCE's broadcasting assets are divided into 2 sections

- Bell Canada
- Bell Media Inc.

Bell Canada's section refers to:

- Chart 143A – Distribution & On Demand
 - Bell Canada
 - Câblevision du Nord de Québec inc.
 - Northwestel Inc.
- Chart 143D – Bell TV
 - Bell ExpressVu Limited Partnership

Bell Media Inc.'s section refers to:

- Chart 143K – Bell Media – Discretionary & Specialty Services (mainstream sports)
- Chart 143I – Bell Media – Discretionary Services (other than mainstream sports)
- Chart 143n – Bell Media – Radio & TV