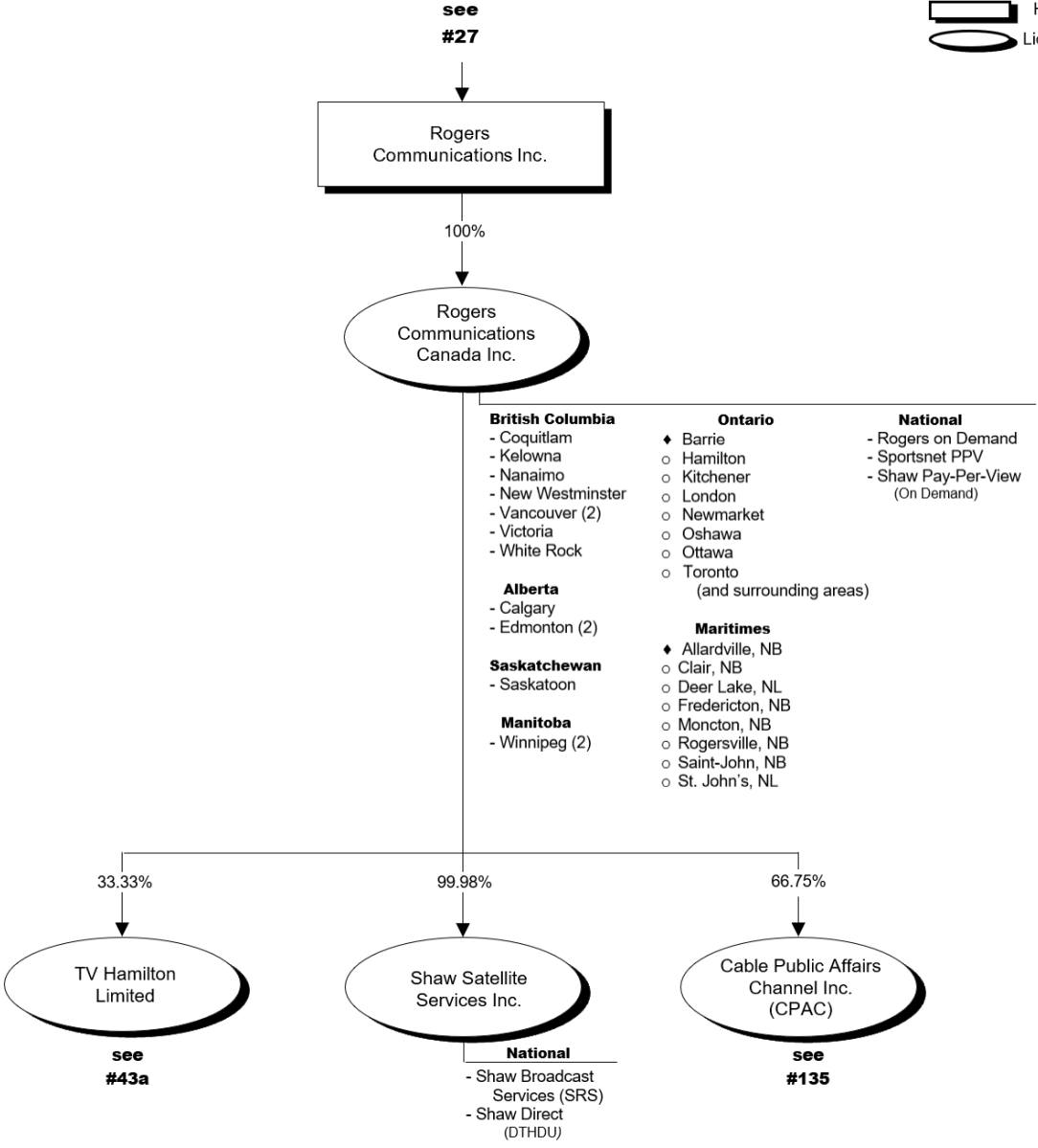


ROGERS

Distribution & On Demand

The percentages refer to voting rights only



Note: Rogers also owns exempt terrestrial BDUs.

UPDATE

CRTC 2019-227 – non-renewal of licence issued to Rogers Communications Canada Inc. for the national, English-language direct-to-home pay-per-view service Rogers Sportsnet DTH PPV.

Update – 2020-07-03 – minor change.

CRTC 2022-76 – approved, subject to a number of modifications and the fulfilment of specific conditions of approval, a change in ownership and effective control through the transfer to Rogers Communications Inc. or its subsidiaries, of all of the issued & outstanding shares of all of the licensed subsidiaries held by Shaw Communications Inc. **NOTE: The transaction closed on 3 April 2023.**

Continuance – 2023-04-03 – Shaw Communications Inc. was continued into the British Columbia jurisdiction.

Amalgamation – 2023-04-03 – of Shaw Communications Inc. and Rogers Communications Inc. as one company under the name of Rogers Communications Inc.

Amalgamation – 2024-01-01 – of Rogers Communications Canada Inc., 7538375 Canada Inc., Shaw Cablesystems Limited, Shaw Fiberlink Ltd., Shaw Pay-Per-View Ltd. and others to continue as Rogers Communications Canada Inc.

Amalgamation – 2024-01-01 – of Shaw Satellite Services Inc. and Star Choice Television Network Incorporated to continue as Shaw Satellite Services Inc.

CRTC 2024-47 – revocation of the licence for the undertaking serving Red Deer. Exempt service.

Update – 2024-06-14 – minor changes.

Update – 2025-06-11 – shareholding of Shaw Satellite Services Inc. as per information submitted in the 2024 period of the Data Collection System.

CRTC 2026-62 – revocation of the licence for the undertaking serving Langford.

SEE ALSO

27, 27B and 27C

NOTICE

The CRTC ownership charts reflect the transactions approved by the Commission and are based on information supplied by licensees. The CRTC does not assume any responsibility for discrepancies between its charts and data from outside sources or for errors or omissions which they may contain.

APPENDIX

Notes: The percentages in this chart refer to voting rights only.

OWNERSHIP

For the ownership of Rogers Communications Inc., see Chart 27.

Rogers Communications Inc. holds:

- 100% of Rogers Communications Canada Inc. which in turn holds:
 - 33.33% in TV Hamilton Limited (see Chart 43a)
 - 99.98% of Shaw Satellite Services Inc.
 - 66.75% in Cable Public Affairs Channel Inc. (see Chart 135)

LICENSEES

Rogers Communications Canada Inc. is the licensee of:

- licences for the cable distribution undertakings in Alberta, British Columbia, Manitoba, Ontario and Saskatchewan (details below)
- a regional licence for the terrestrial broadcasting distribution undertakings in Ontario (details below)
- a regional licence for the terrestrial broadcasting distribution undertaking in the Maritimes (details below)
- a national licence for the on demand service known as Rogers On Demand
- a national licence for the on demand service known as Sportsnet PPV
- a national licence for the on demand service known as Shaw Pay-Per-View

Licences for the cable distribution undertakings serving the following locations in Alberta, British Columbia, Manitoba and Saskatchewan:

British Columbia

- Coquitlam
- Kelowna
- Nanaimo
- New Westminster
- Prince George
- Vancouver (2)
- Victoria
- White Rock

Alberta

- Calgary
- Edmonton (2)

Saskatchewan

- Saskatoon

Manitoba

- Winnipeg (2)

The regional licence for the terrestrial broadcasting distribution undertaking serves the following locations in Ontario:

- Barrie
 - Hamilton
 - Kitchener
 - London
 - Newmarket
 - Oshawa
 - Ottawa
 - Toronto (and surrounding areas)

The regional licence for the terrestrial broadcasting distribution undertaking serves the following locations in the Maritimes:

- Allardville, NB
 - Clair, NB
 - Deer Lake, NL
 - Fredericton, NB
 - Moncton, NB
 - Rogersville, NB
 - Saint-John, NB
 - St. John's, NL

Shaw Satellite Services Inc. is licensee of

- Shaw Broadcast Services, a national satellite relay distribution undertaking
- Shaw Direct, a national direct-to-home satellite distribution undertaking

Rogers also owns exempt terrestrial broadcasting undertakings.