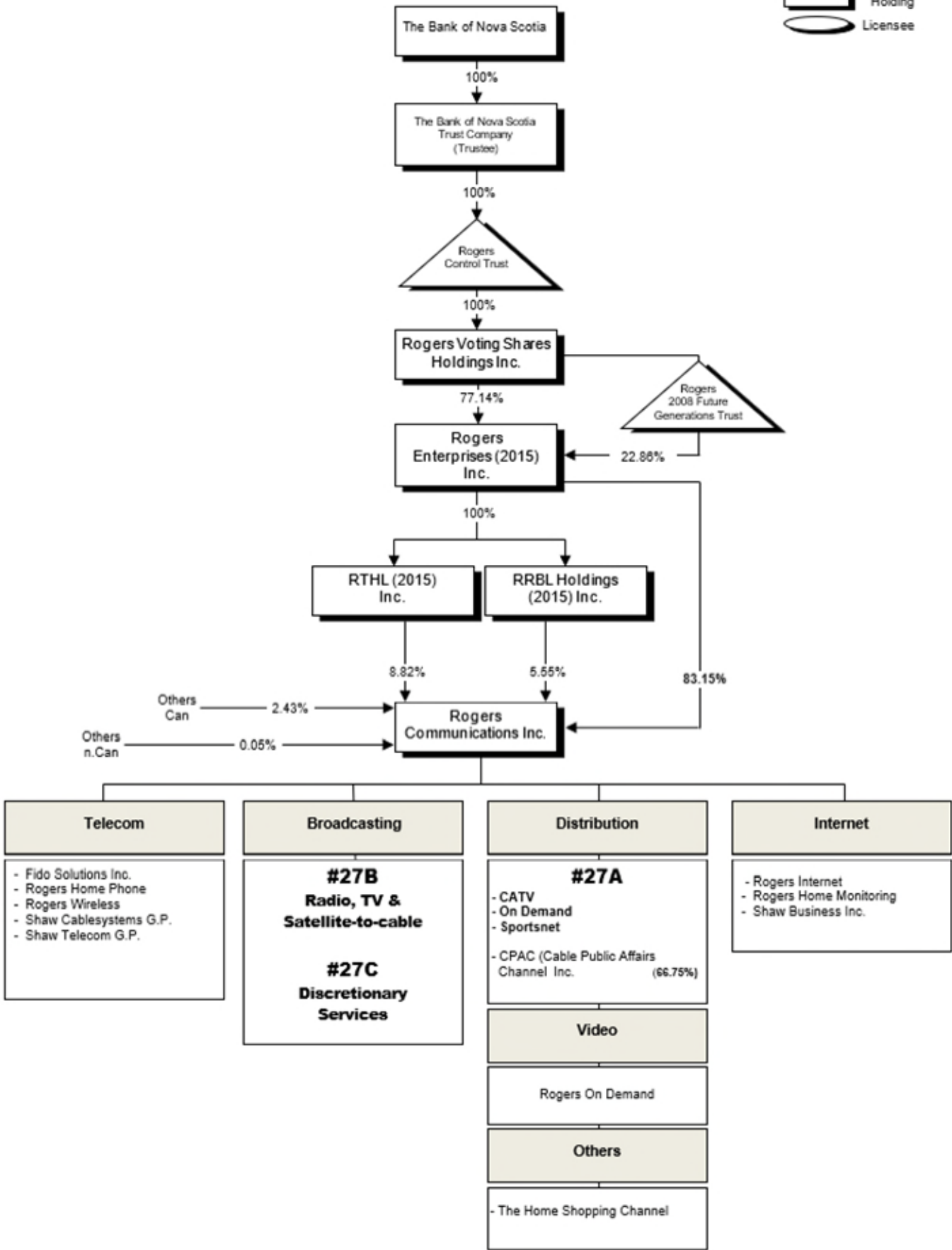


ROGERS

Corporate Structure

The percentages refer to voting rights only



UPDATE

Update – 2021-02-12 – of Rogers Communications Inc.'s shareholding as per information submitted in the 2020 Data Collection System.

Update – 2021-10-15 – minor changes.

Update – 2021-11-03 – minor changes.

CRTC 2022-76 – approved, subject to a number of modifications and the fulfilment of specific conditions of approval, a change in ownership and effective control through the transfer to Rogers Communications Inc. or its subsidiaries, of all of the issued & outstanding shares of all of the licensed subsidiaries held by Shaw Communications Inc. **NOTE: The transaction closed on 3 April 2023.**

Update – 2023-11-08 – Shaw Business Inc., Shaw Cablesystems G.P., Shaw Telecom G.P. and Shaw Telecom Inc. are now owned by Rogers.

Update – 2024-01-18 – minor changes.

Amalgamation – 2024-01-01 – of Rogers Communications Canada Inc., 7538375 Canada Inc., Shaw Cablesystems Limited, Shaw Fiberlink Ltd., Shaw Telecom Inc., and others to continue as Rogers Communications Canada Inc.

Amalgamation – 2024-01-01 – of Shaw Satellite Services Inc. and Star Choice Television Network Incorporated to continue as Shaw Satellite Services Inc.

Update – 2024-04-24 – Rogers Communications Inc. no longer holds any voting interest in Cogeco inc. and Cogeco Communications inc.

Update – 2024-06-14 – minor changes.

SEE ALSO

27A, 27B and 27C

NOTICE

The CRTC ownership charts reflect the transactions approved by the Commission and are based on information supplied by licensees. The CRTC does not assume any responsibility for discrepancies between its charts and data from outside sources or for errors or omissions which they may contain.

APPENDIX

Notes: The percentages in this chart refer to voting rights only.

Rogers Communications Inc. is ultimately owned by Rogers Control Trust, the details of which are as follows;

Rogers Communications Inc. is directly held:

83.15% by Rogers Enterprises (2015) Inc.
8.82% by RTHL (2015) Inc. which is 100% held by Rogers Enterprises (2015) Inc.
5.55% by RRBL Holdings (2015) Inc. which is 100% held by Rogers Enterprises (2015) Inc.
2.43% by the other Canadian shareholders and
0.05% by the non-Canadian shareholders

Rogers Enterprises (2015) Inc. is 77.14% held by Rogers Voting Shares Holdings Inc. and 22.86% by Rogers 2008 Future General Trust.

Rogers Voting Shares Holdings Inc. is 100% held by Rogers Control Trust.

Rogers Control Trust is 100% held by the trustee The Bank of Nova Scotia Trust Company, which in turn is 100% held by the Bank of Nova Scotia.

NOTE: The chart then describes what can be found on the other Rogers charts, and provides an overview of Rogers other holdings, such as:

Chart 27A

Distribution, Rogers on demand & Sportsnet undertakings
Rogers 66.75% interest in Cable Public Affairs Channel Inc. (CPAC)

Chart 27B

Rogers Radio, TV and Satellite-to-cable

Chart 27C

Rogers Discretionary Services

Overview of Rogers Telecom and other, such as:

Fido Solutions Inc.
Rogers Home Shopping Channel
Rogers Home Phone service
Rogers Wireless services
Rogers Internet and Rogers Home Monitoring
Shaw Business Inc.
Shaw Cablesystems G.P.
Shaw Telecom G.P.